



Compact HR700/HFF700



HR700/HFF700

Model	HR700/HFF700
Vessel Length	8 - 11m 26 - 35ft
Power Supply (DC)	12V
Motor (Watts)	600
Max Load	318kg 700lb
Work Load	57kg 125lb
Amps work load	80
Max Line Speed	25m/min 80ft/min
Chain Size	6 - 8mm 1/4 - 5/16"
Rope Size	12 - 14mm 1/2 - 9/16"
Net Weight	DC 12kg DC 26lb
MANUAL OPERATION	N/A

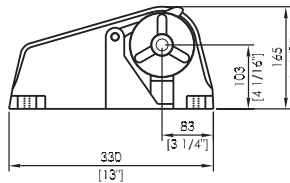
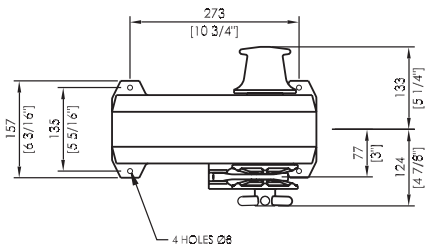
Features

- HR700 Power Up/Power Down, with manual release
- Rope chain combination gypsy for rope & chain combination or chain only
- Rope Chain Management System (RCMS)
- Heavy duty dual direction motor in 12 & 24V DC
- Durable marine grade white gloss finish alloy housing
- Fully enclosed motor & gearbox
- Independent gypsy and capstan operation
- Luxury chromed marine grade bronze running gear
- Stainless steel drive shaft
- Cone clutch/brake
- Stainless steel mounting studs
- Shaft seal
- Clutch release handle
- Installation/Operation booklet



Options

- HFF700 fully automatic free fall
- Full range of accessories including chain, rope, anchors, anchor roller, chain stoppers, snubber kits & devil claws
- Electrical operating options & accessories
- Auto anchor



HR700