



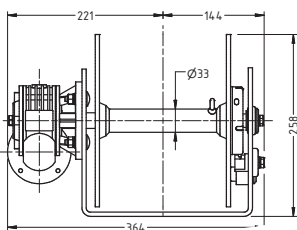
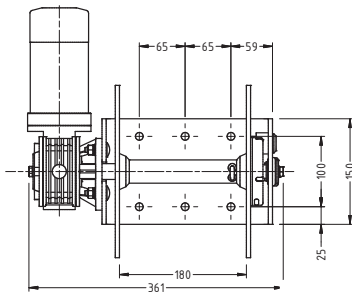
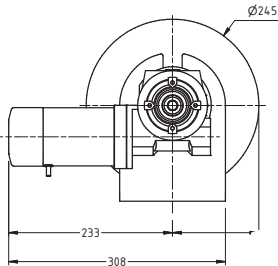
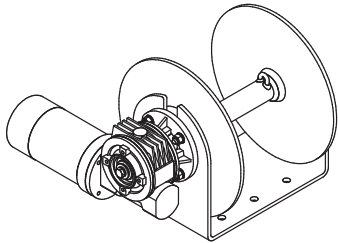
Drum Winches

DW08 Power Up/Power Down DFF08 FreeFall



DW08/DFF08 FreeFall

Model	DW08 / DFF08
VESSEL LENGTH	5 - 8m 16 - 26ft
POWER SUPPLY (DC)	12V
MOTOR (Watts)	600
MAX LOAD	180kg at 7m/min 400lb
WORK LOAD	75kg at 33m/min
MAX LINE SPEED	33m/min
CHAIN SIZE (Various)	6 - 8mm 1/4 - 5/16"
ROPE SIZE (Various)	8mm 5/16"
NET WEIGHT (KG)	15/16
CAPACITY (Drum)	120m of 6mm line or 80m of 8mm line + 6m of 6mm chain



- Muir's patented Auto Free Fall, Power Up & Power Down, or Manual Release Free Fall are all available to you on the 1 unit!
- Mechanical Auto & Manual Release Free Fall means no troublesome electronics need to be mounted on the Drum or in your chain locker.
- Drum Shaft on a serviceable bearing centre for smooth hassle free operation even under full load.
- Muir's designed HDPE & UV protected Heavy Duty Brake means no over-run of the Drum during Free Fall.
- All Muir Free Falling Drum Winches are supplied with Circuit Breaker, Reversing Solenoid Pack, Helm Control Switch and Fascia Panels, plus, Simple Tools & Hardware for an easy 30 second adjustment from Auto Free Fall; to Manual Free Fall and Power Up Power Down options!
- Installation Instructions and Service Manual provided, and backed by Muir's 3 year limited warranty!
- Anchoring made easy, fast, and reliable with a Muir Drum Winch.
- No electronic components to fail.
- Larger Drum capacity than other Free Falls on the market.
- Does not require any more space than the standard Drum Winch



Features

- Compact Anchoring system to suit boats with little or no anchor rode storage.
- Designed and made in Australia.
- Drum-316 stainless Steel.
- 3 year limited warranty.
- Inc. Reversing Solenoid, 100 amp circuit breaker and Up / Down Rocker switch.
- Fitting Instructions Included with full electrical wiring diagram.
- Simple installation.
- "Tangle free" rope and chain operation.



Drum Winch rope/
chain guide rollers