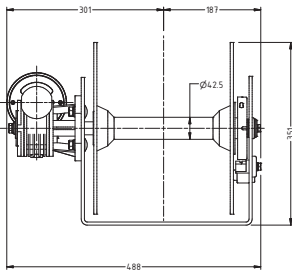
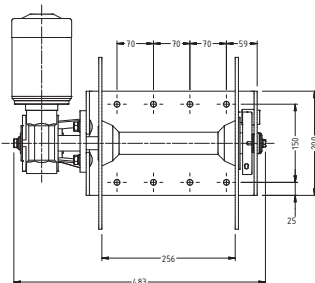
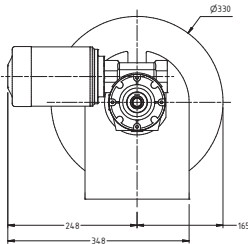
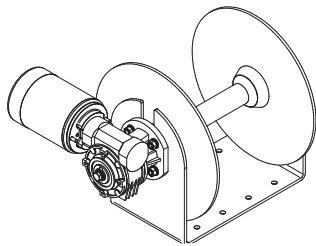


Drum Winches

DW10/DW12/DW15 Power Up/Power Down DFF10/DFF12/DFF15 FreeFall



DW10/DFF10 FreeFall
DW12/DFF12 FreeFall
DW15/DFF15 FreeFall



DFF10 FreeFall

Note: DFF12 and DFF15 will have a larger motor and gearbox

Model	DW10 / DFF10	DW12 / DFF12	DW15 / DFF15
VESSEL LENGTH	8 - 10m 26 - 34ft	10 - 12m 34 - 40ft	12- 14m 40 - 47ft
POWER SUPPLY (DC)	12/24V	12/24V	12/24V
MOTOR (Watts)	1000	1200	1500
MAX LOAD	260kg 575lb	312kg 690lb	390kg at 8m/min 860lb
WORK LOAD (KG)	75	90	112 at 33m/min
MAX LINE SPEED	33m/min	33m/min	33m/min
CHAIN SIZE (Various)	8 - 10mm 5/16 - 3/8"	8 - 10mm 5/16 - 3/8"	10 - 12mm 3/8 - 1/2"
ROPE SIZE (Various)	10mm 3/8"	10mm 3/8"	12mm 1/2"
NET WEIGHT (KG)	30/31	32/34	35/37
CAPACITY (Drum)	100m of 8mm line or 80m of 10mm line + 6m of 8mm chain		

- Muir's patented Auto Free Fall, Power Up & Power Down, or Manual Release Free Fall are all available to you on the 1 unit!
- Mechanical Auto & Manual Release Free Fall means no troublesome electronics need to be mounted on the Drum or in your chain locker.
- Drum Shaft on a serviceable bearing centre for smooth hassle free operation even under full load.
- Muir's designed HDPE & UV protected Heavy Duty Brake means no over-run of the Drum during Free Fall.
- All Muir Free Falling Drum Winches are supplied with Circuit Breaker, Reversing Solenoid Pack, Helm Control Switch and Fascia Panels, plus, Simple Tools & Hardware for an easy 30 second adjustment from Auto Free Fall; to Manual Free Fall and Power Up Power Down options!
- Installation Instructions and Service Manual provided, and backed by Muir's 3 year limited warranty!
- Anchoring made easy, fast, and reliable with a Muir Drum Winch.
- No electronic components to fail.
- Larger Drum capacity than other Free Falls on the market.
- Does not require any more space than the standard Drum Winch



Features

- Compact Anchoring system to suit boats with little or no anchor rode storage.
- Designed and made in Australia.
- Drum-316 stainless Steel.
- 3 year limited warranty.
- Inc. Reversing Solenoid, 100 amp circuit breaker and Up / Down Rocker switch.
- Fitting Instructions Included with full electrical wiring diagram.
- Simple installation.
- "Tangle free" rope and chain operation.



Drum Winch rope/
chain guide rollers