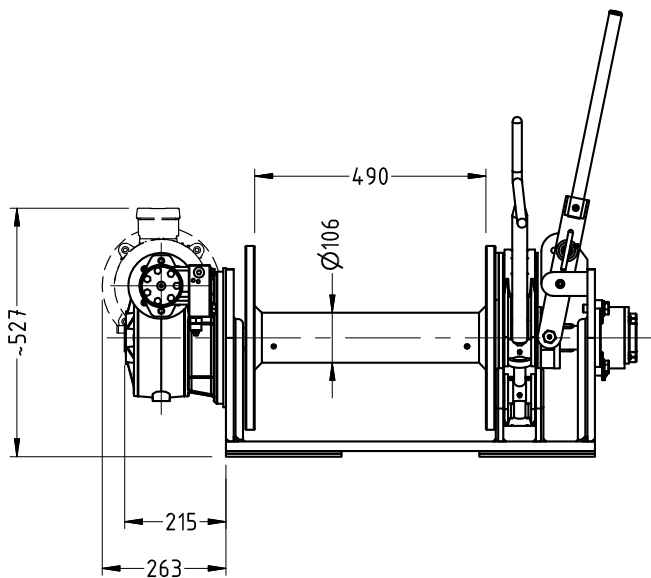
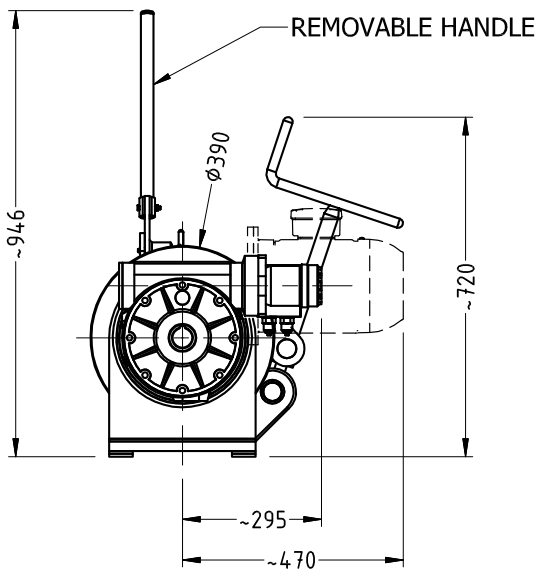
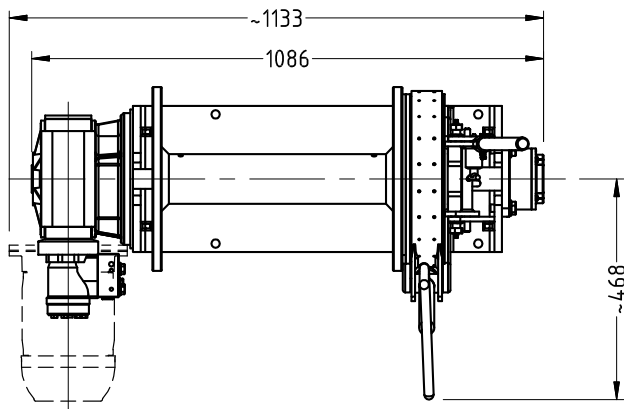




SD100

**Brake & Clutch
General Assembly (AC/HYD Motor)**



PERFORMANCE CRITERIA

MODEL	SD100AC	SD100HYD
Power Supply	24V, 208/415V, 50/60Hz, 3PH	HYDRAULIC
Input Power (KW)	3 / 4 KW	-
Hydraulic Flow (l/min)	-	24 litres/min
Pressure (bar)	-	140 Bar
Lifting Force	6 - 7kN	7 - 8kN
Mean Recovery Speed	9M/min (minimum)	9M/min (minimum)
Brake Holding Power	110kN	110kN
Class Certification	Optional	Optional
Drum Capacity	120M of 12-14mm cable 10M of 16mm chain	120M of 12-14mm cable 10M of 16mm chain
Docking Capstan	Optional	Optional
Construction	Steel/Alloy	Steel/Alloy
Weight (approx.)	Steel 320kg/Alloy 135kg	Steel 320kg/Alloy 100kg
Finish	Aluminium	Aluminium
	Enamel over zinc primer	Enamel over zinc primer

General Assembly
(AC/HYD Motor)

