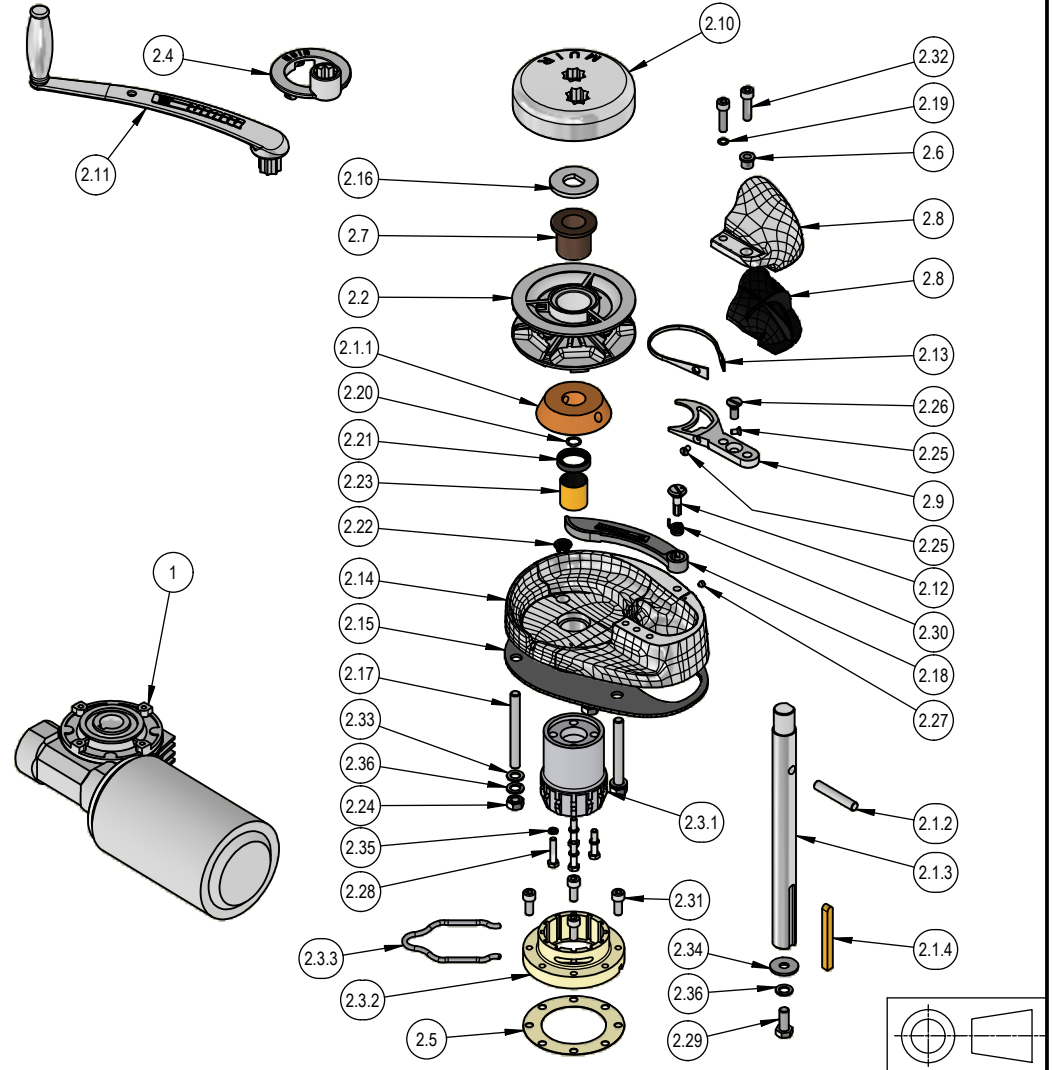



W:\Controlled Drawings\U00 UNIVERSAL GENERIC EQUIPMENT\U00 - RECREATIONAL\1 - STORM 600 - 850-2200\U001004.idw

ITEM	QTY	PART NUMBER	DESCRIPTION
1	1	G041023	1000W / MVF49 MOTOR GEARBOX COMBINATION
2	1	K081152	TOPWORKS ASSEMBLY STORM VR850-1250
2.1	1	K061103	SHAFT ASSEMBLY VR850-1250
2.1.1	1	P081009	CONE BRONZE VR/C850A/1250/2200 - TO BE DRILLED WITH SHAFT
2.1.2	1	P151011	DRIVE PIN SS316 VR/VRC 850/1250A 3/8" x53mm LONG
2.1.3	1	P181057	SHAFT - VR850A/1250A DIA 25mm x 303.6mm
2.1.4	1	P121037	KEY BRASS 8 X 8 X 80mm
2.2	1	P10xxxx	GENERIC GYPSY - "REFER TO ONLINE MUIR GYPSY SELECTOR"
2.3	1	P011066	ADAPTOR QUICK FIT VR/C850-2200 2 PIECE STAINLESS STEEL INCLUDES CLIP
2.3.1	1	P051014	ADAPTOR "QUICK FIT" VR/C850-2200 BASE SIDE
2.3.2	1	P501012	ADAPTOR "QUICK FIT" VR/C850-2200 GEARBOX SIDE
2.3.3	1	P501013	ADAPTOR "QUICK FIT" VR/C850-2200 RETAINING CLIP
2.4	1	P011086	ADAPTOR SS316 MORS GYPSY RING VR/VRC 850-2200
2.5	1	P011147	QUICK FIT ADAPTOR GASKET
2.6	1	P021010	BUSH SS316 VR/C1000A CHAIN COVER
2.7	1	P021118	HAT BUSH SUIT VR/VRC850-2200 SS GYPSY (NON-MORS)
2.8	1	P051003	CHAIN COVER KIT SS316 VR/C850/1250/2200 (INCLUDES INSERT)
2.9	1	P051063	PEELER SS316 VR/C850 SPOON TYPE
2.10	1	P071006	CLUTCH CAP SS316 VR850 SINGLE BI SQUARE CLOSED
2.11	1	P111047	WINCH HANDLE SS316 10 (CAST)
2.12	1	P151017	PIN SS316 - FINGER, STORM/ATLANTIC 3/4" x 27mm
2.13	1	P191007	STRIPPER SS316 VR/C 850 STORM (EXC FREEFALL)
2.14	1	P221015	BASE SS316 VR/C850/1250/2200
2.15	1	P221016	BASE SEAL STORM VR/C 850/1000/1200/1250/2200
2.16	1	P231007	D' WASHER SS304 2 x 7/8 x 5mm VR1250/1K
2.17	3	P241005	STUD SS316 VR/C850A M10 x 95mm
2.18	1	R401002	FINGER SS316 VR/C850A
2.19	1	R411004	O-RING SEAL 7.65 ID x 1.78 (BS011)VR/C850/1000/1200/1250/2200
2.20	1	R411006	O-RING SEAL 28.5X25X1.75 (BS022) VR/C850/1250
2.21	1	R421003	SEAL 35 X 25 X 7 (TC12463) VR/C850-2200 BASE
2.22	1	R441002	CHAINMETER SENSOR HOLE PLUG (IN PKT 100) SUIT ALL BASE'S (16MM BLACK)
2.23	1	R511009	BASE BUSH DU SUIT SS 850/1250/2200 BASE 25 X 28 X 30 BRONZE BACKED FRIMET-B
2.24	3	S201006	NUT HEX SS316 M10
2.25	2	S331001	SCREW CSK PH MT SS316 3/16" X 3/8"
2.26	1	S331016	SCREW CSK SL MT SS316 M8 X 20mm
2.27	1	S351009	SCREW GRUB SS316 M6 x 6mm
2.28	4	S361004	SCREW HEX HD SS316 M6 X 25mm
2.29	1	S361015	SCREW HEX HD SS304 M10 x 25mm
2.30	1	S361057	SPRING FINGER SS316 ATLANTICS RH
2.31	4	S451019	SCREW SHCS SS304 M8 X 20mm
2.32	2	S451020	SCREW SHCS SS316 M8 X 30mm
2.33	3	S751010	WASHER FLAT SS316 3/8" X 1"
2.34	1	S751014	WASHER FLAT SS316 10mm X 30.0mm X 2.5 DIN MUDGUARD
2.35	4	S761002	WASHER SPRING SS304 6mm
2.36	4	S761007	WASHER SPRING SS304 10mm



TOLERANCES (mm) X ± 0.5 X.X ± 0.1 X.XX ± 0.03	DIMENSIONS IN MILLIMETRES UNLESS OTHERWISE STATE.	 SINCE 1988 ENGINEERING GROUP PTY. LTD.		
	DO NOT SCALE DRAWING			
UNLESS OTHERWISE SPECIFIED	MANUSOFT NUMBER	UNIVERSAL STORM VERTICAL WINDLASS VR1250 DC STD		
STOCK No.:	APPROVED CO		DRG NO: U001004 DRAWING ISSUE: 1	
MATERIAL:	CHECKED MB			
FINISH:	DRAWN BY: CO MM 12/06/2025		PART NO: U001004	
WEIGHT: N/A	UNLESS SPECIFICALLY STATED OTHERWISE, THIS DRAWING IS THE PROPERTY OF MUIR ENGINEERING GROUP, AND NO FEATURE EMBODIED HEREIN MAY BE DISCLOSED, EXCEPT AS PREVIOUSLY AUTHORISED, IN WRITING, BY MUIR ENGINEERING GROUP.	SCALE: NTS	SHEET 1 OF 1	A4

1	INITIAL RELEASE	12/06/2025	CO	
REV #	ECR#	DESCRIPTION	DATE	DRAWN
REVISION HISTORY				