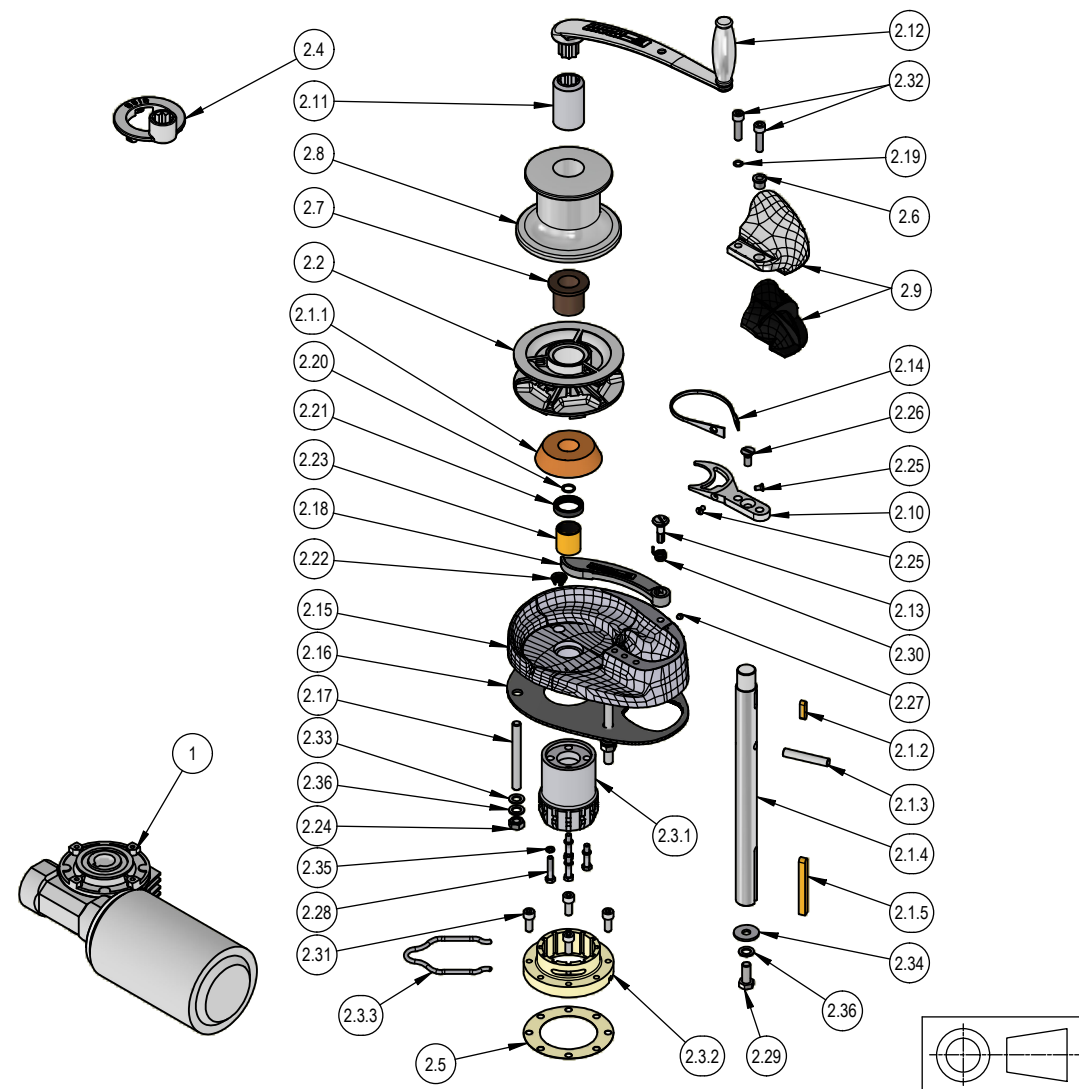



W:\Controlled Drawings\U00 UNIVERSAL GENERIC EQUIPMENT\U00 - RECREATIONAL\1 - STORM 600 - 850-2200\U001005.idw

ITEM	QTY	PART NUMBER	DESCRIPTION
1	1	G04xxxx	1000W / MVF49 MOTOR GEARBOX COMBINATION 12/24V
2	1	K081153	TOPWORKS ASSEMBLY STORM VRC850-1250
2.1	1	K061118	SHAFT ASSEMBLY VRC850-1250
2.1.1	1	P081009	CONE BRONZE VR/C850A/1250/2200 - TO BE DRILLED WITH SHAFT
2.1.2	1	P121019	KEY BRASS 1/4" X 1/4" X 25mm
2.1.3	1	P151011	DRIVE PIN SS316 VR/VRC 850/1250A 3/8" x53mm
2.1.4	1	P181070	SHAFT - VRC850A-1250 DIA 25 x 338mm
2.1.5	1	P121037	KEY BRASS 8 X 8 X 80mm
2.2	1	P10xxxx	GENERIC GYPSY - *REFER TO ONLINE MUIR GYPSY SELECTOR*
2.3	1	P011066	ADAPTOR QUICK FIT VRC850-2200 2 PIECE STAINLESS STEEL INCLUDES CLIP
2.3.1	1	P051014	ADAPTOR "QUICK FIT" VR/C850-2200 BASE SIDE
2.3.2	1	P501012	ADAPTOR "QUICK FIT" VR/C850-2200 GEARBOX SIDE
2.3.3	1	P501013	ADAPTOR "QUICK FIT" VR/C850-2200 RETAINING CLIP
2.4	1	P011086	ADAPTOR SS316 MORS GYPSY RING VR/VRC 850-2200
2.5	1	P011147	QUICK FIT ADAPTOR GASKET
2.6	1	P021010	BUSH SS316 VR/C1000A CHAIN COVER
2.7	1	P021118	HAT BUSH SUIT VR/VRC850-2200 SS GYPSY (NON-MORS)
2.8	1	P041059	CAPSTAN SS316 VRC850A
2.9	1	P051003	CHAIN COVER KIT SS316 VR/C850/1250/2200 (INCLUDES INSERT)
2.10	1	P051063	PEELER SS316 VR/C850 SPOON TYPE
2.11	1	P071010	CLUTCH NUT SS316 VRC850
2.12	1	P111047	WINCH HANDLE SS316 10 (CAST)
2.13	1	P151017	PIN SS316 - FINGER, STORM/ATLANTIC 3/4" x 27mm
2.14	1	P191007	STRIPPER SS316 VR/C 850 STORM (EXC FREEFALL)
2.15	1	P221015	BASE SS316 VR/C850/1250/2200
2.16	1	P221016	BASE SEAL STORM VR/C 850/1000/1200/1250/2200
2.17	3	P241005	STUD SS316 VR/C850A M10 x 95mm
2.18	1	R401002	FINGER SS316 VR/C850A
2.19	1	R411004	O-RING SEAL 7.65 ID x 1.78 (BS011)VR/C850/1000/1200/1250/2200
2.20	1	R411006	O-RING SEAL 28.5X25X1.75 (BS022) VR/C850/1250
2.21	1	R421003	SEAL 35 X 25 X 7 (TC12463) VR/C850-2200 BASE
2.22	1	R441002	CHAINMETER SENSOR HOLE PLUG
2.23	1	R511009	BASE BUSH DU SUIT SS 850/1250/2200 BASE 25 X 28 X 30 BRONZE BACKED FRIMET-B
2.24	3	S201006	NUT HEX SS316 M10
2.25	2	S331001	SCREW CSK PH MT SS316 3/16" X 3/8"
2.26	1	S331016	SCREW CSK SL MT SS316 M8 X 20mm
2.27	1	S351009	SCREW GRUB SS316 M6 x 6mm
2.28	4	S361004	SCREW HEX HD SS316 M6 X 25mm
2.29	1	S361015	SCREW HEX HD SS304 M10 x 25mm
2.30	1	S361057	SPRING FINGER SS316 ATLANTICS RH
2.31	4	S451019	SCREW SHCS SS304 M8 X 20mm
2.32	2	S451020	SCREW SHCS SS316 M8 X 30mm
2.33	3	S751010	WASHER FLAT SS316 3/8" X 1"
2.34	1	S751014	WASHER FLAT SS316 10mm X 30.0mm X 2.5 DIN MUDGUARD
2.35	4	S761002	WASHER SPRING SS304 6mm
2.36	4	S761007	WASHER SPRING SS304 10mm



TOLERANCES (mm) X ±0.5 XX ±0.1 XXX ±0.03	DIMENSIONS IN MILLIMETRES UNLESS OTHERWISE STATE.	 ENGINEERING GROUP PTY. LTD.
	DO NOT SCALE DRAWING	
UNLESS OTHERWISE SPECIFIED	APPROVED	UNIVERSAL STORM VERTICAL WINDLASS VRC1250 DC STD
STOCK No.:	CO	
MATERIAL:	CHECKED	DRG NO: U001005
FINISH:	PG	
WEIGHT: N/A	DRAWN BY: MM 11/06/2025	PART NO: U001005 DRAWING ISSUE: 1
Unless specifically stated otherwise, this drawing is the property of MUIR Engineering Group, and no feature embodied herein may be disclosed, except as previously authorised, in writing, by MUIR Engineering Group.		SCALE: NTS SHEET 1 OF 1

1	INITIAL RELEASE	11/06/2025	MM	
REV #	ECR#	DESCRIPTION	DATE	DRAWN
REVISION HISTORY				