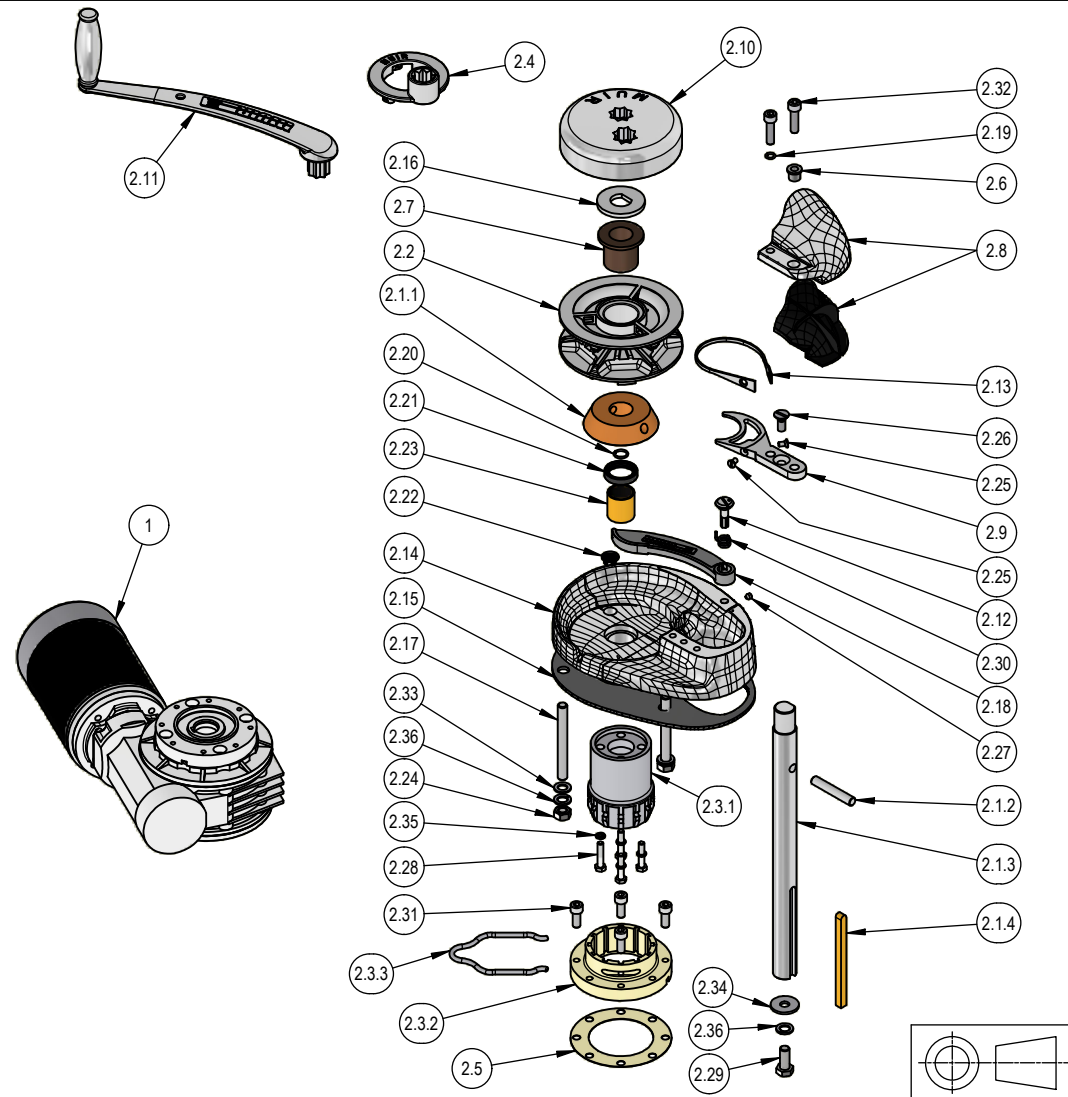



W:\Controlled Drawings\U00 UNIVERSAL GENERIC EQUIPMENT\U00 - RECREATIONAL\1 - STORM 600 - 850-2200\U001006.idw

| ITEM | QTY | PART NUMBER | DESCRIPTION |
|-------|-----|-------------|---|
| 1 | 1 | G061014 | 1200W / MVF63 MOTOR GEARBOX COMBINATION |
| 2 | 1 | K081151 | TOPWORKS ASSEMBLY STORM VR850-1250 |
| 2.1 | 1 | K061108 | SHAFT ASSEMBLY VR2200A |
| 2.1.1 | 1 | P081009 | CONE BRONZE VR/C850A/1250/2200 - TO BE DRILLED WITH SHAFT |
| 2.1.2 | 1 | P151011 | DRIVE PIN SS316 VR/VR/C 850/1250A 3/8" x53mm LONG |
| 2.1.3 | 1 | P181062 | SHAFT - VR2200A |
| 2.1.4 | 1 | P121033 | ROD BRASS SQ 7.94 (5/16) x 117mm |
| 2.2 | 1 | P10xxxx | GENERIC GYPSY - "REFER TO ONLINE MUIR GYPSY SELECTOR" |
| 2.3 | 1 | P011066 | ADAPTOR QUICK FIT VR/C850-2200 2 PIECE STAINLESS STEEL INCLUDES CLIP |
| 2.3.1 | 1 | P051014 | ADAPTOR "QUICK FIT" VR/C850-2200 BASE SIDE |
| 2.3.2 | 1 | P501012 | ADAPTOR "QUICK FIT" VR/C850-2200 GEARBOX SIDE |
| 2.3.3 | 1 | P501013 | ADAPTOR "QUICK FIT" VR/C850-2200 RETAINING CLIP |
| 2.4 | 1 | P011086 | ADAPTOR SS316 MORS GYPSY RING VR/VR/C 850-2200 |
| 2.5 | 1 | P011147 | QUICK FIT ADAPTOR GASKET |
| 2.6 | 1 | P021010 | BUSH SS316 VR/C1000A CHAIN COVER |
| 2.7 | 1 | P021118 | HAT BUSH SUIT VR/VR/C850-2200 SS GYPSY (NON-MORS) |
| 2.8 | 1 | P051003 | CHAIN COVER KIT SS316 VR/C850/1250/2200 (INCLUDES INSERT) |
| 2.9 | 1 | P051063 | PEELER SS316 VR/C850 SPOON TYPE |
| 2.10 | 1 | P071006 | CLUTCH CAP SS316 VR850 SINGLE BI SQUARE CLOSED |
| 2.11 | 1 | P111047 | WINCH HANDLE SS316 10 (CAST) |
| 2.12 | 1 | P151017 | PIN SS316 - FINGER, STORM/ATLANTIC 3/4" x 27mm |
| 2.13 | 1 | P191007 | STRIPPER SS316 VR/C 850 STORM (EXC FREEFALL) |
| 2.14 | 1 | P221015 | BASE SS316 VR/C850/1250/2200 |
| 2.15 | 1 | P221016 | BASE SEAL STORM VR/C 850/1000/1200/1250/2200 |
| 2.16 | 1 | P231007 | D' WASHER SS304 2 x 7/8 x 5mm VR1250/1K |
| 2.17 | 3 | P241005 | STUD SS316 VR/C850A M10 x 95mm |
| 2.18 | 1 | R401002 | FINGER SS316 VR/C850A |
| 2.19 | 1 | R411004 | O-RING SEAL 7.65 ID x 1.78 (BS011)VR/C850/1000/1200/1250/2200 |
| 2.20 | 1 | R411006 | O- RING SEAL 28.5X25X1.75 (BS022) VR/C850/1250 |
| 2.21 | 1 | R421003 | SEAL 35 X 25 X 7 (TC12463) VR/C850-2200 BASE |
| 2.22 | 1 | R441002 | CHAINMETER SENSOR HOLE PLUG |
| 2.23 | 1 | R511009 | BASE BUSH DU SUIT SS 850/1250/2200 BASE 25 X 28 X 30 BRONZE BACKED FRIMET-B |
| 2.24 | 3 | S201006 | NUT HEX SS316 M10 |
| 2.25 | 2 | S331001 | SCREW CSK PH MT SS316 3/16" X 3/8" |
| 2.26 | 1 | S331016 | SCREW CSK SL MT SS316 M8 X 20mm |
| 2.27 | 1 | S351009 | SCREW GRUB SS316 M6 x 6mm |
| 2.28 | 4 | S361004 | SCREW HEX HD SS316 M6 X 25mm |
| 2.29 | 1 | S361015 | SCREW HEX HD SS304 M10 x 25mm |
| 2.30 | 1 | S361057 | SPRING FINGER SS316 ATLANTICS RH |
| 2.31 | 4 | S451019 | SCREW SHCS SS304 M8 X 20mm |
| 2.32 | 2 | S451020 | SCREW SHCS SS316 M8 X 30mm |
| 2.33 | 3 | S751010 | WASHER FLAT SS316 3/8" X 1" |
| 2.34 | 1 | S751014 | WASHER FLAT SS316 10mm X 30.0mm X 2.5 DIN MUDGUARD |
| 2.35 | 4 | S761002 | WASHER SPRING SS304 6mm |
| 2.36 | 4 | S761007 | WASHER SPRING SS304 10mm |



| | | |
|--|--|---|
| TOLERANCES (mm) X ± 0.5 X.X ± 0.1 X.XX ± 0.03 | DIMENSIONS IN MILLIMETRES UNLESS OTHERWISE STATE. |  SINCE 1988 ENGINEERING GROUP PTY. LTD. |
| | DO NOT SCALE DRAWING MANUSOFT NUMBER | |
| UNLESS OTHERWISE SPECIFIED | APPROVED <div style="font-size: 2em; color: blue; text-align: center;">CO</div> | UNIVERSAL STORM VERTICAL WINDLASS VR2200 DC STD |
| STOCK No.: | CHECKED <div style="font-size: 2em; color: blue; text-align: center;">MB</div> | |
| MATERIAL: | FINISH: | DRG NO: U001006 |
| WEIGHT: N/A | DRAWN BY: MM 12/06/2025 | PART NO: U001006 |
| Unless specifically stated otherwise, this drawing is the property of MUIR Engineering Group, and no feature embodied herein may be disclosed, except as previously authorised, in writing, by MUIR Engineering Group. | | SCALE: NTS |
| | | SHEET 1 OF 1 |
| | | A4 |

| 1 | INITIAL RELEASE | 12/06/2025 | MM | |
|------------------|-----------------|-------------|------|-------|
| REV # | ECR# | DESCRIPTION | DATE | DRAWN |
| REVISION HISTORY | | | | |